



Good by tradition – even better.

vinylBoard *Facade profiles embossed – Wood texture*

vinylBoard, inspired by the traditional featheredge profile, is installed horizontally thus the upper profile is slightly overlapping the lower profile. Dirt and rainwater can drain away quickly and easily. The profiles are screwed concealed. vinylBoard featheredge is an environmentally friendly and sustainable alternative to the classic wooden facade. The profiles are weather-resistant, durable and easy-care. Regular painting is a thing of the past.



10 YEARS OF WARRANTY



ENERGY EFFICIENCY



RECYCLED PLASTIC



EASY TO CLEAN



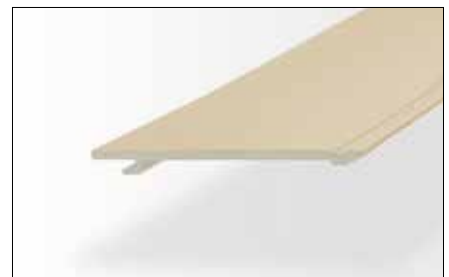
REDUCTION EMISSION

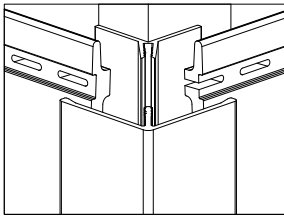


DESIGNED & MADE IN GERMANY

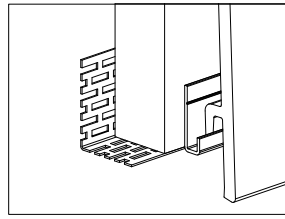
Sustainability from one source.

Facade profiles, complete and color matching accessories and fixings. Vinylit facade systems can be completely recycled. This is sustainability!

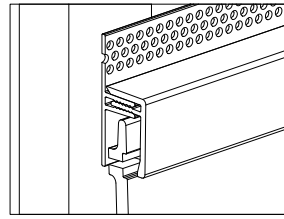




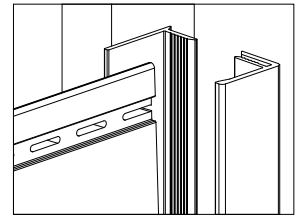
Corner profile



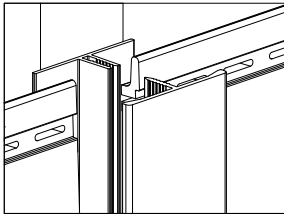
Vent profile and starter profile



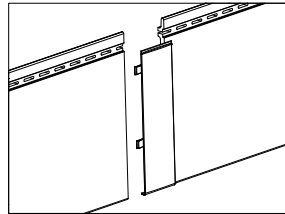
Top vent profile



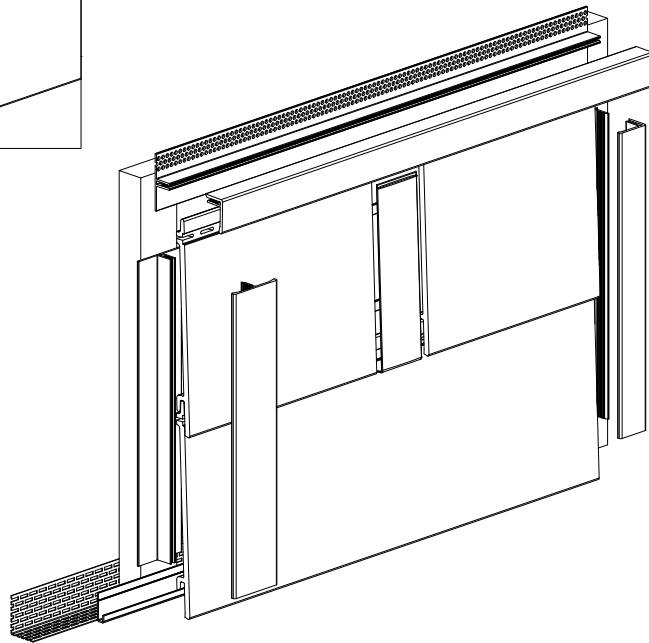
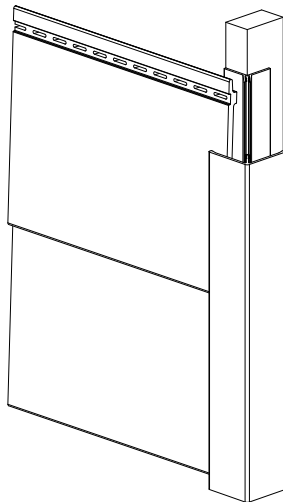
Universal trim



H-Profile



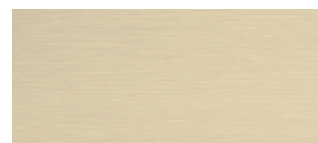
Joint



Signal White (ca. RAL 9003)



Creme (ca. RAL 9001)



Light Ivory (ca. RAL 1015)



Light Grey (ca. RAL 7047)



Claystone



Cappuccino



Grey (ca. RAL 7001)



Basalt Grey (ca. RAL 7012)

Installation recommendation

