



The economic alternative.

vinylTop *Facade profiles embossed – Wood texture*

vinylTop facade profiles made of high-quality plastics are UV-resistant and durable, resistant to decay and insect infestation. The profiles are usually installed horizontally. Profile contour and the embossed surface correspond to a traditional wooden shiplap structure. vinylTop is the economical solution for the cladding of house walls, garages and garden sheds. Thanks to the low weight, they are particularly suitable for an installation in locations that are difficult to access. With appropriated substructure, they are suitable for ventilated facades.



10 YEARS OF WARRANTY



ENERGY EFFICIENCY



RECYCLED PLASTIC



EASY TO CLEAN



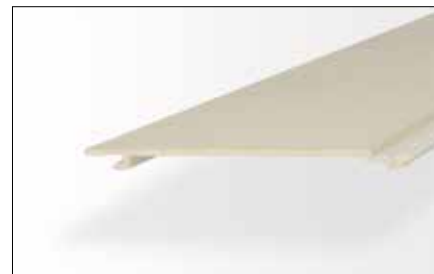
REDUCTION EMISSION

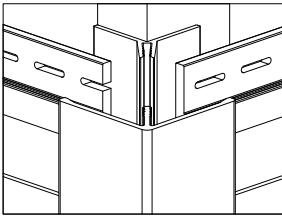


DESIGNED & MADE IN GERMANY

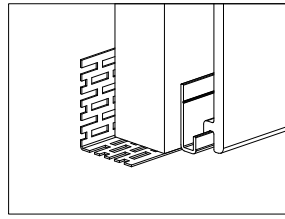
Sustainability from one source.

Facade profiles, complete and color matching accessories and fixings. Vinylit facade systems can be completely recycled. This is sustainability!

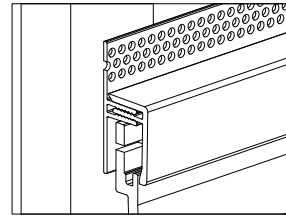




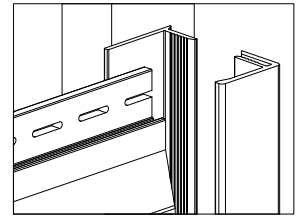
Corner profile



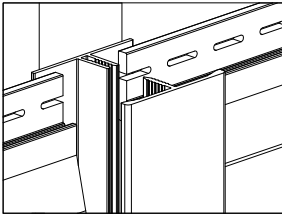
Vent profile and starter profile



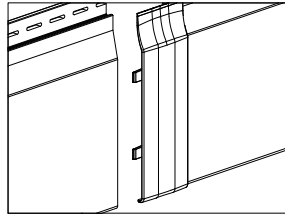
Top vent profile



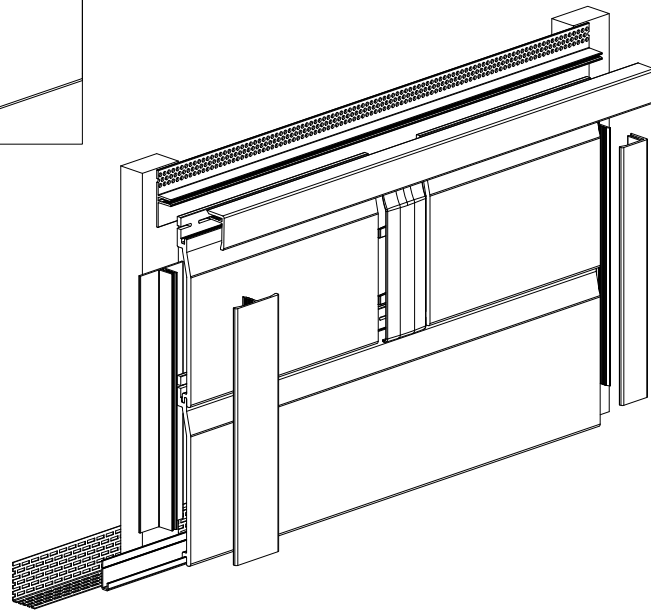
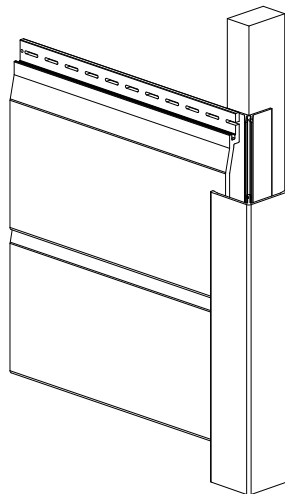
Universal trim



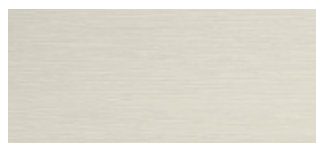
H-Profile



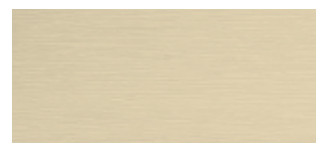
Joint



Signal White (ca. RAL 9003)



Creme (ca. RAL 9001)



Light Ivory (ca. RAL 1015)



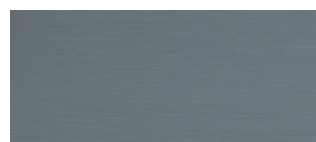
Light Grey (ca. RAL 7047)



Claystone



Cappuccino



Grey (ca. RAL 7001)



Basalt Grey (ca. RAL 7012)

Installation recommendation

