

Installation recommendation

viny**Plus** Quattro



*Installation advantage
fourfold-profile*

vinylit
FASSADENSYSTEME

CE-Declaration of Performance

Properties of the construction product supplied correspond to the declared services of the CE Declaration of Performance vinyPlus, no. 2013-001

(Download: vynylit.de/downloads)

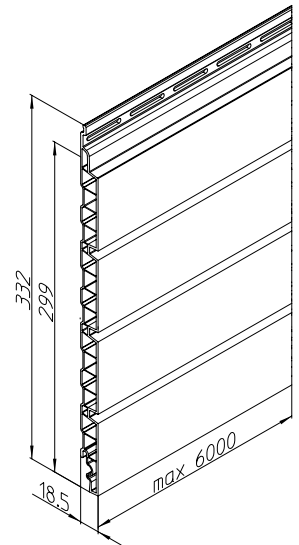


Planning & Execution

This document represents the manufacturers recommendation for installation only. Whilst all reasonable care is taken in compiling technical information, all recommendations regarding the use of products are made without guarantee since the conditions of use are beyond the control of Vinylit. It is the user's responsibility to convince himself that each product is fit for the purpose for which he intends to use it and that the actual conditions of use are suitable. The installer is obliged to check regarding the latest installation instruction and to consider the accepted technology rules, the regulations for facade mounting and the national standards, as well as to observe fire protection and statics.

Storage

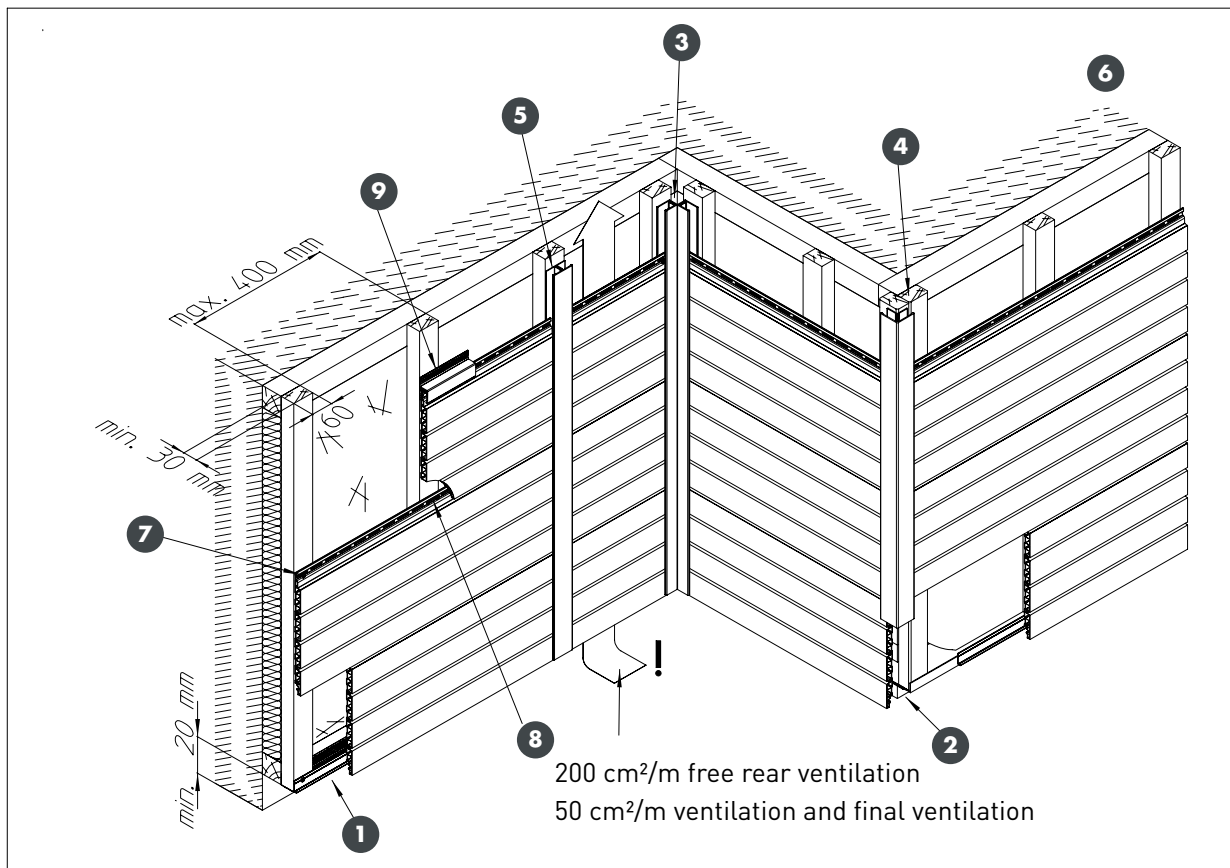
vinyPlus Quattro facades must be stored on level ground. Max. 4 pallets can be stacked. Make sure that the vertical bars are on top of each other. When storing it is necessary to protect the product particularly against dirt and direct exposure to sun or wet conditions. When opening the bundles, remove the packaging by cutting open along the entire length. vinyPlus Quattro facades come - with exception of matt Woodec colours - with a protective film, which needs to be removed straight after installing.



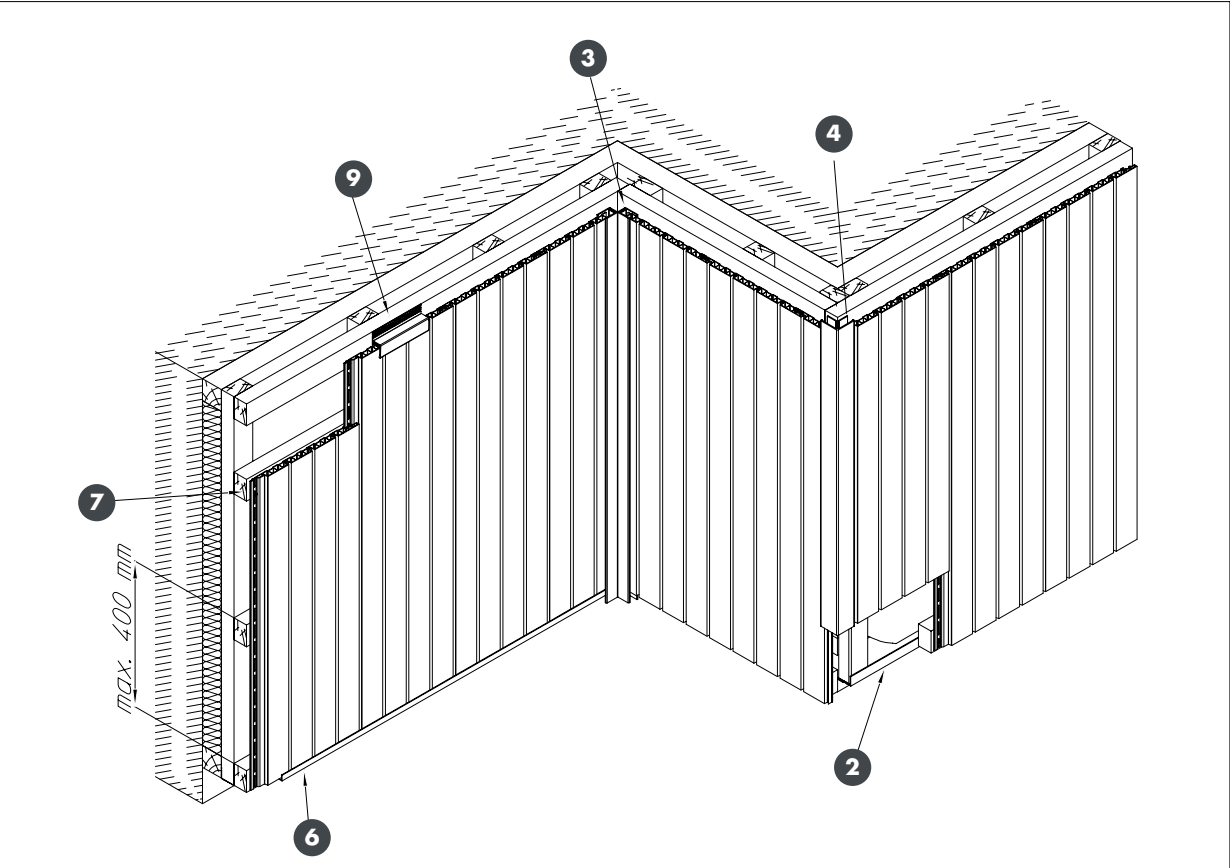
Attention!

While assembling, please be aware of the need for continuous ventilation between vinyPlus Quattro cladding profiles and wall. According to DIN 18516-1, a free cross-section of at least 50 cm² per 1 m wall length must be maintained. A free cross-section of at least 200 cm²/m is required for continuous ventilation of the facade.

vinyPlus Quattro – horizontal installation



vinyPlus Quattro – vertical installation



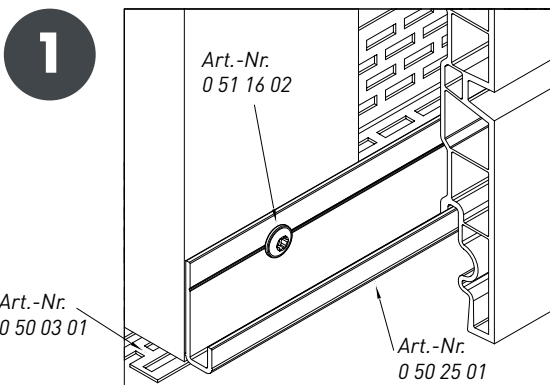
Sub-construction

For a conventional wooden sub-structure timber battens treated according to DIN 68800 or equivalent must be used. The Base battens are anchored in the masonry using approved facade dowels. The thickness of the insulation material should be the same as the thickness of the base battens. In case of multiple battens, insulation material must be secured against sagging between vertical battens with insulation holders, in accordance with the instructions of the insulation manufacturer. Vertical or horizontal support battens (min. 30 mm x 50 mm) are connected to the base or counter battens at a distance of max. 40 cm with stainless steel screws. Battens must be aligned vertically and horizontally in the same level. Unevenness can be levelled out with assembly wedges (Item no. 0 50 12 29) (see page 6).

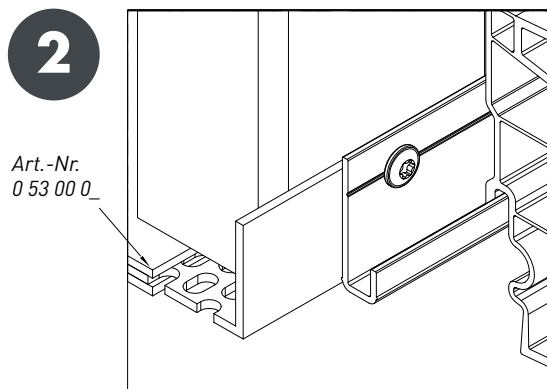
Installation

vinylPlus Quattro can be laid horizontally from the bottom to the top, or vertically and is always linked to groove and spring systems. On the front side the impacts of one panel to another, are covered by H-profiles. To accommodate the lowest profiles in case of horizontally installation, a starter strip 6m (Art.-Nr. 0 21 26 __) is aligned with drilling screws (Art.-Nr. 0 51 16 02), for further information look at point 6.

aluminium vent profile 30/40+ starter profile



base profile Varix 60/90

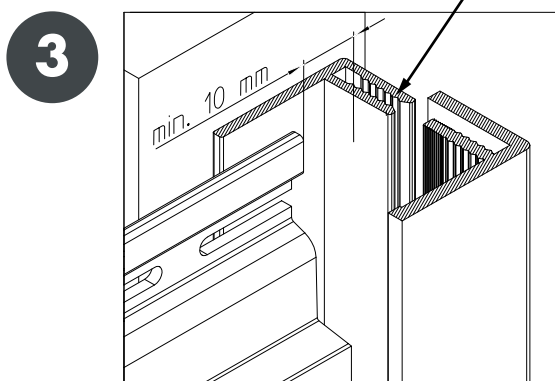


Upper and lower facade ends must be designed in such a way that ventilation of the facade is guaranteed. Ventilation cross-section required by the technical regulations is at least 50 cm² per 1 m wall length. Free rear ventilation cross-section is at least 200 cm² per meter. To prevent small animals from entering the ventilation space, a bottom vent profile (Item no. 0 50 03 01). is attached to the lower end of the facade. Alternatively, the base profile Varix may be used. The entire substructure is covered by this. Ventilation profiles must have a distance of at least 20 mm from the floor!

Attention!

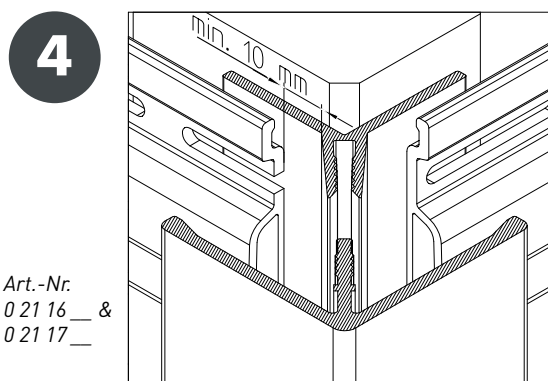
Prior to fixing the vinylPlus Quattro facade profiles the base parts of the 2-part accessory profiles have to be fixed onto the sub-construction. Accessory profiles are to be fixed with countersunk head screws (Item no. 0 51 40 02) at least every 30 cm. Knock the visible front of the upper part into the base part with a rubber hammer.

Universal trim 2 part



Art.-Nr.
0 21 15 __ &
0 21 18 __

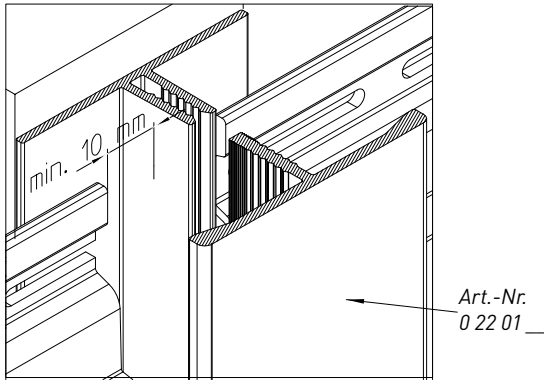
corner profile 2 part



Art.-Nr.
0 21 16 __ &
0 21 17 __

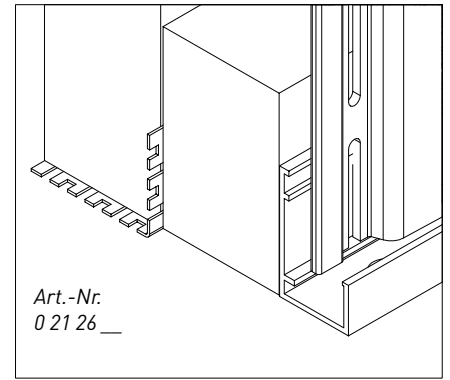
H-profile 2-part

5



starter profile 6m

6



Attention!

With a temperature fluctuation of 10 °C – in the unassembled state – vinylPlus Quattro facade profiles shrink/expand by 0.6 mm per meter. This corresponds to a shrinkage or expansion of 3.6 mm for a 6000 mm long profile.

It is essential to ensure in case of expansion, that there is enough space at the profile ends to other fixed components.

Space is min. 10 mm. The same applies to the installation of accessories.

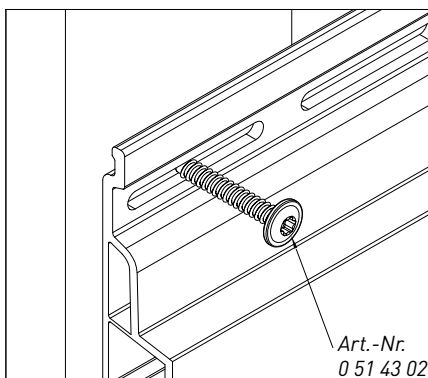
vinylPlus Quattro facade profiles should not be installed below temperatures of 5 °C.

Fixing

The fixing of vinylPlus Quattro occurs through the middle of stamped long holes on the profile edges above. On the half of the profile length, it is needed to place a fixing point via the full material or via two screws like point 8, in order to ensure an even extension. Therefore stainless screws need to be used (fixing screw with lens head 4 x 30 mm, Art.-Nr. 0 51 43 02). About 10 screws/m² are needed.

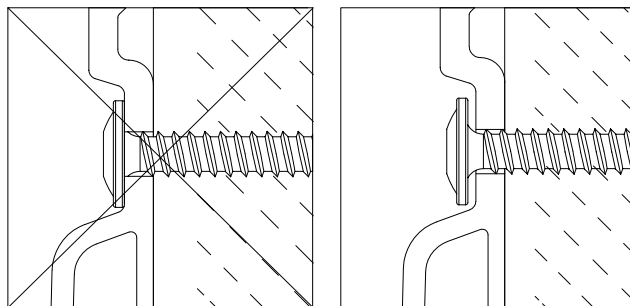
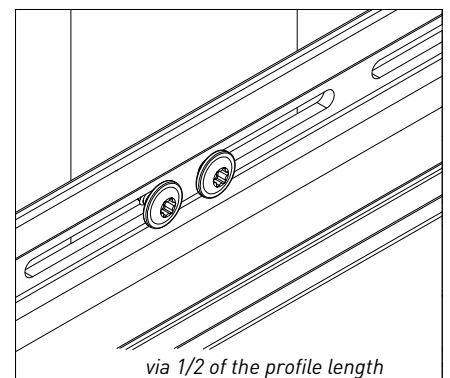
fixing screw

7



fixing point

8

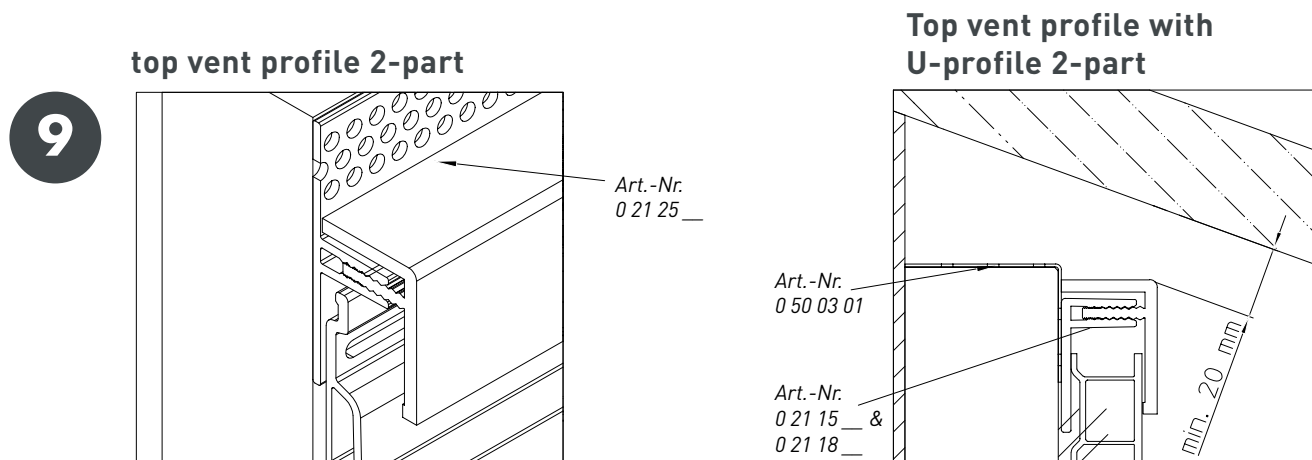


The fixing screws must each sit in the middle of the elongated holes and must not be tightened under tension.

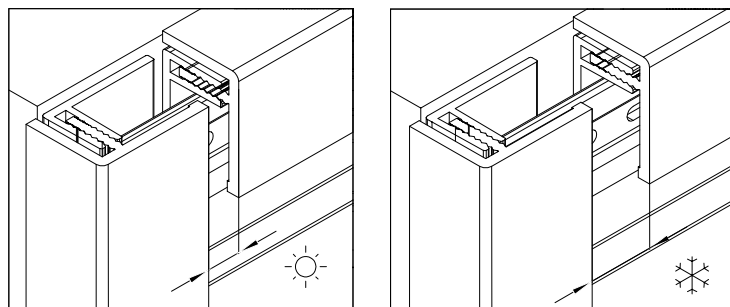
Upper facade finish

To cover the cut edge and allow for ventilation, a 2-part top vent profile (Item no. 0 21 24 __ & 0 21 25 __) with ventilation openings is installed at the top of the facade.

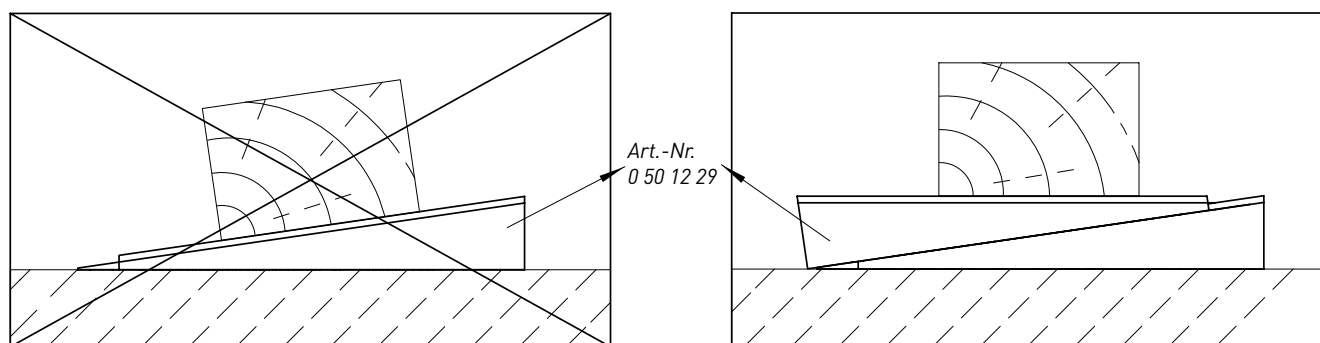
Alternatively, a 2-part universal trim can be used to cover cut edges. A sufficient distance to adjacent components must be left for ventilation.



When temperature rises, the accessory profiles are also subject to thermal expansion. It is essential to ensure for expansion that there is enough space at the profile ends to other fixed components. The upper parts of vertically mounted 2-part accessory profiles are to be fixed to prevent slipping in the upper area, e.g. with assembly adhesive, silicone or screws.



Assembly wedge



Unevenness in a wall can be levelled out with assembly wedges. Avoid twisting the battens. If facade profiles are mounted on twisted or uneven substructures, warping can occur.

Important installation instructions

Putting together the profiles

By putting together the profiles you need to pay attention to your underground, the profile has to lay fully on the ground so that it can not be overshifted. Due to the manufacturing process, there is the possibility that a minimum gap between the profiles comes up.



wrong



right

Laying of the insulation

The insulation should not close the rear ventilation. The distance should amount to a minimum of 20mm.



not enough distance



enough distance



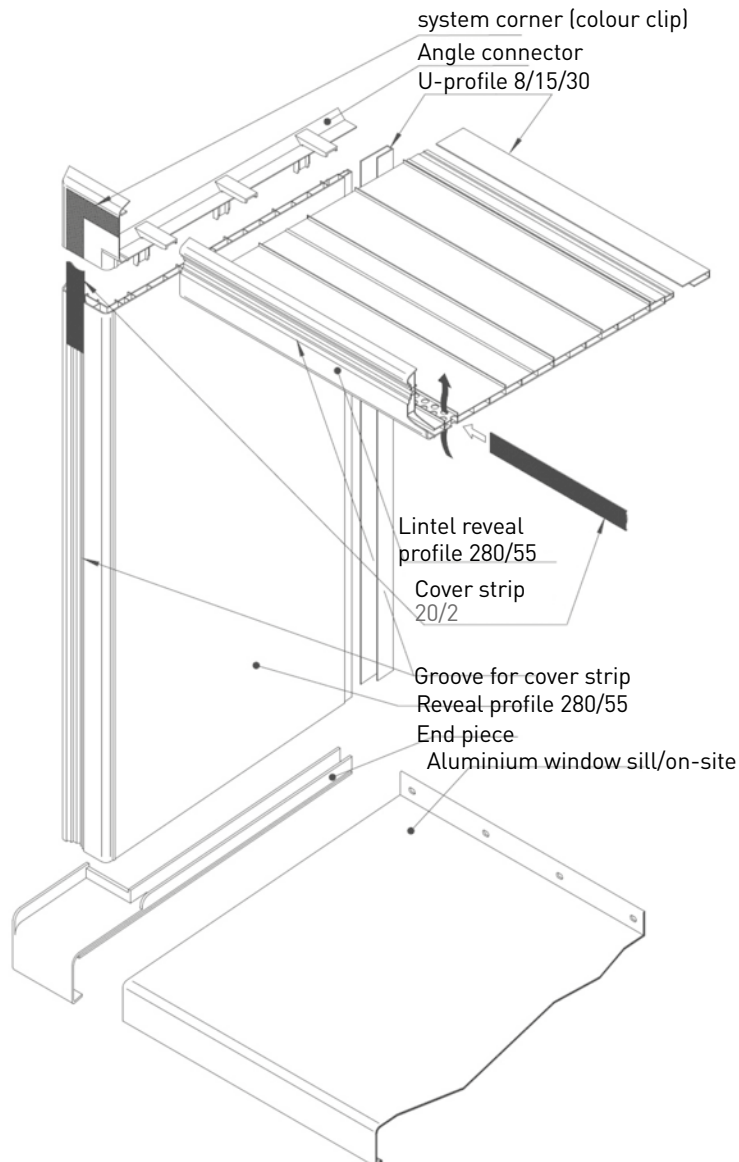
rear ventilation closed



rear ventilation opened

Framing of windows & doors

The vinyCom reveal system is used to line the window and door reveals.



A gap of at least 5 mm must be left between the upper edge of the Vinylit facade profile and the lower edge of the window sill to ventilate the facade surface under the window sill. In order to avoid soiling the facade surface, we recommend a window sill overhang of at least 3 cm - 4 cm and the installation of window sill end pieces (Item no. 0 63 60 ___).

General information

Use

vinylPlus Quattro facades are made from high-grade plastics in an environmentally-friendly manner and filmed with a durable, weather + UV resistant foil, developed for long-term exterior applications. vinylPlus Quattro facades correspond to the European fire classification D-s3, d2 acc. to DIN EN 13501-1.

Color consistency, production errors & damage

vinylPlus Quattro facade profiles bear the manufacturing date on the back. In order to ensure facade surfaces are largely identical in color, it must be ensured that only panels from the same date of manufacture are used for each elevation. Deficient profiles are to be sorted out and exchanged free of charge if the complaint is justified. The person carrying out the work is responsible for already assembled, defective profiles.

Treatment

vinylPlus Quattro facade profiles and accessory profiles must not be rubbed against each other with the foiled visible side. Do not bring any hard or sharp objects into contact with the visible side. Do not place scaffolding, ladders etc. against the facade and accessory profiles.

Processing

vinylPlus Quattro facades can be sawn or drilled using traditional joinery tools and methods. Cutting should be done with a fine toothed circular saw.

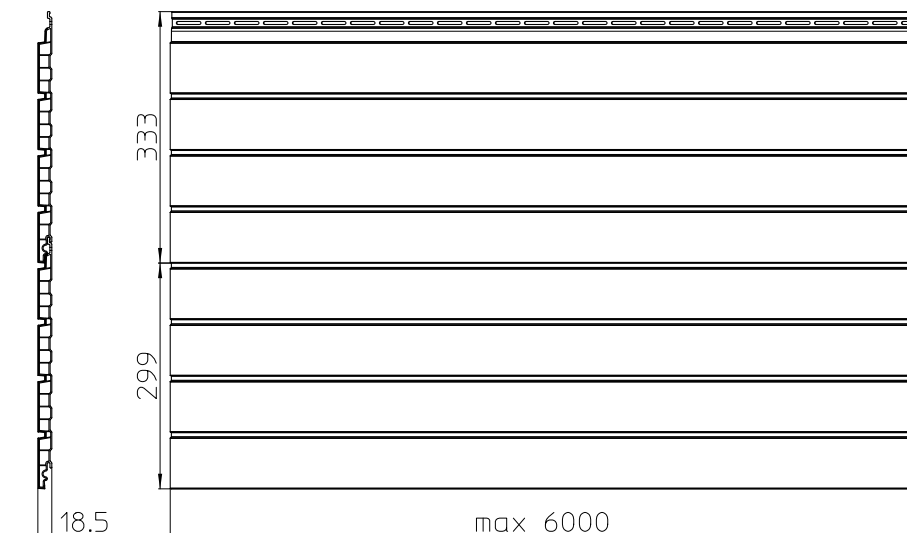
Care instructions

Remove light soiling with water (water spray/dust). Cleaning of greasy soiling with commercially available cleaning agents. No abrasives or solvents. No further maintenance is necessary.



Technical data

Profil width	333 mm	
Cover width	299 mm	
Thickness	18,5 mm	
Length	6000 mm	
Thickness foil	200 µm	
Weight	ca. 7,3 kg/m ²	
Raw density profiles	1,4 g/cm ³	DIN EN ISO 845
Coefficient of linear expansion	ca. 0,06 mm/mK	ISO 11359-2
Elasticity module	≥ 2000 MPa	DIN EN ISO 527-2
Tensile strength	≥ 35 MPa	DIN EN ISO 527-2
Elongation at break	≥ 20 %	DIN EN ISO 527-2
Flexural strength	75 MPa	DIN EN ISO 178
Impact strength code	23,10	DIN EN 13245-2
Thermal conductivity	0,15 W/mK	DIN EN ISO 22007-1
Water resorption	≥ 1,6 %	DIN EN ISO 62



vinylPlus Quattro

Notes

A large grid of graph paper for taking notes, consisting of many small squares. The grid covers most of the page, starting from the top right of the 'Notes' header and extending down to the bottom of the page.

Vynylit Fassaden GmbH
Gobietstraße 10
D-34123 Kassel
Tel.: +49 (0) 561 9591-5
Fax: +49 (0) 561 9591-302
info@vynylit.de
vynylit.de